



INTEGRA REALTY RESOURCES

# IRR | JACKSON

COMMERCIAL REAL ESTATE  
VALUATION & CONSULTING



8

years serving  
Jackson, MS  
markets

## IRR® — INTEGRA REALTY RESOURCES —

provides world-class commercial real estate valuation and counseling services to both local and national top financial institutions, developers, corporations, law firms, and government agencies. As one of the largest independent property valuation and counseling firms in the United States, we provide our diverse array of clients the highly informed opinions and trusted expert advice needed to understand the value, use and feasibility of their real estate. ***IRR. Local expertise. Nationally.***

930

appraisals completed  
annually

## RECENT APPRAISAL ASSIGNMENTS OF NOTABLE AND VARIED ASSETS

### Office



- **Nerhus Plaza I and Plaza II, 713 Pear Orchard Rd., Ridgeland, MS, 116,560 SF**
- Millbranch Office Park, 140 Mayfair Rd., Hattiesburg, MS, 51,094 SF
- Mississippi Sports Medicine, 4500 Lakeland Dr., Flowood, MS, 58,540 SF
- Baptist Madison Campus, 401 Baptist Dr., Madison, TN, 81,097 SF
- U.S. Dept. of Agriculture Forest Service, 6425 Lakeover Rd., Jackson, MS, 24,036 SF
- The Horne Building, Colony Park Blvd., Ridgeland, MS, 95,850 SF

### Industrial



- **Distribution Warehouse, 4299 Industrial Dr., Jackson, MS, 121,617 SF**
- Queen City Warehouse/Transload Bldg., 2710 Hwy 11S, Meridian, MS, 419,004 SF
- Capital City Beverages, 920 W. County Line Rd., Jackson, MS, 141,504 SF
- Southern Beverage Co., 1939 Davis Johnson Rd., Richland, MS, 112,393 SF
- Distribution Warehouse, 13280 I-55 & 2625 Hwy 51, Terry, MS, 160,857 SF
- Distribution Warehouse, 253 Old Jackson Rd., Madison, MS, 152,460 SF

### Multifamily



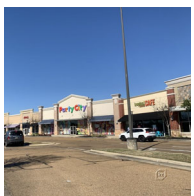
- **College Park Apartments (Senior Living), Meridian, MS, 68,079 SF / 100 Units**
- Addison Place Apartments, 3175 Robinson Rd., Jackson, MS, 187,952 SF / 225 Units
- Wisteria Duplexes, 7 Roxie St., Brandon, MS, 42,400 SF / 53 Units
- Sunset Village Apartments, 900 White St., Cleveland, MS, 111,884 SF / 128 Units
- Hillview Apartments, 514 Old Country Club Rd. E., Marion, MS, 43,937 SF / 48 Units

### Hospitality



- **Staybridge Suites, 801 Ridgewood Rd., Ridgeland, MS, 56,511 SF / 92 Rooms**
- Residence Inn, 855 Centre St., Ridgeland, MS, 66,480 SF / 100 Rooms
- Hotel Vue, 130 John R. Junkin Dr., Natchez, MS, 77,053 SF / 91 Rooms
- Hilton Garden Inn, I-565, Madison, AL, 62,960 SF / 102 Rooms
- Home 2 Suites, 105 Hospitality Dr., Flowood, MS, 64,794 SF / 106 Rooms
- Red Roof Inn, 700 Larson St., Jackson, MS, 32,093 SF / 105 Rooms

### Retail



- **Lakeland Commons, 200-399 Ridge Way, Flowood, MS, 215,682 SF**
- Sawmill Square Mall, 910 Sawmill Rd., Laurel, MS, 250,463 SF
- The Market at Grants Ferry, 600 Grants Ferry Rd., Brandon, MS, 74,263 SF
- Swinging Bridge Market, 5750 I-55 S., Byram, MS, 39,093 SF
- College Crossing, 3823 Hwy 80 E., Pearl, MS, 18,595 SF
- Ollie's Bargain Outlet, 1175 E. County Line Rd., Jackson, MS, 45,517 SF

### Specialty Assignments



- **The Club at Township, 340 Township Ave., Ridgeland, MS, 34,164 SF / 12 Units**
- Southern Trace Country Club/Golf Course, Shreveport, LA, 41,947 SF
- Phi Delta Theta House, Mississippi State, MS, 12,034 SF / 40 Units
- Nelco Cineplex Movie Theater, 600 Cinema Dr., Greenville, MS, 23,144 SF
- New Summit School, Lakeland 2525 Lakeward Dr., Jackson, MS, 57,925 SF
- Jellystone Park, 143 Campground Rd., Pelahatchie, MS, 41,884 SF / 219 Units

## OUR VALUE PROPOSITION

What sets our firm apart is the longevity of our principals and senior analysts who have been collaborating on property analyses for over 25 years. Through developing our team relationships, our specialty appraisal practices have evolved to create high quality, industry-leading standards. Over this 25+ year relationship, our staff has evolved into specialty appraisal practices. One staff member appraises apartments, another large shopping centers, another office buildings, another industrial buildings; we even have a staff member that appraises churches.



### **John R. Praytor, MAI, Executive Director**

Mr. Praytor has 33+ years of real estate valuation and consulting experience. Mr. Praytor has extensive knowledge and experience in the valuation of regional malls, community/neighborhood shopping centers, office buildings (CBD and suburban), warehouse/distribution, multifamily (include CBD condominium development), hotels and motels, vacant land and special purpose properties. John has extensive experience in preparing appraisals for condemnation and litigation support.



### **James (Jim) O. Turner II, MAI, Managing Director**

Mr. Turner has over 17 years of real estate valuation and consulting experience. Jim has extensive experience in the valuation of right of way, office buildings (CBD and suburban), warehouse/distribution, hotels and motels, vacant land, and special purpose properties.



### **Eugene K. (Kenny) Owen, Jr., Managing Director**

Mr. Owen has been actively engaged in the appraisal industry for over 10 years specializing in valuation and counselling for office buildings, community/neighborhood shopping centers, regional malls, hotels and motels, multifamily, vacant land, warehouse/distribution, industrial buildings, convenience stores and special project properties. Kenny's experience is concentrated in metropolitan properties including office buildings, industrial buildings, apartments, senior housing, shopping centers, convenience stores and health facilities.



### **Michelle Alexander, MAI, MRICS, Managing Director**

Ms. Alexander has been engaged in real estate valuations and counselling for almost 30 years specializing in the appraisal of major urban properties including apartments (conventionally-operated, Low Income Housing Tax Credit (LIHTC), federally and HUD financed, assisted properties), office buildings, and shopping centers. Michelle is a commissioner with the Tennessee Real Estate Commission and a member of the Appraisal Institute Education Relief Foundation.

## OUR CLIENTS

- Arvest Bank
- BancorpSouth Bank
- Bank of America
- Bank of Brookhaven
- Bank of Forest
- Bank of Oklahoma
- Bank of the West
- Bank of Yazoo
- BankFirst
- Bank OZK
- BankPlus
- CB&S Bank
- Centennial Bank
- Citizens National Bank
- Coastal States Bank
- Community Bank of Mississippi
- Copiah Bank
- Fidelity Bank
- Fifth Third Bank
- First Bank MS
- First Bank at the Lake
- First Citizens National Bank
- First Commercial Bank
- First Horizon Bank
- First South Farm Credit
- FNBC Community Bank
- Guaranty Bank & Trust Co.
- Gulf Coast Bank & Trust Co.
- Hancock Whitney Bank
- IberiaBank
- Keesler Federal Credit Union
- Magnolia Bank
- Origin Bank
- Partner's Bank
- Patriot Bank
- Peoples Bank
- Pike National Bank
- PriorityOne Bank
- Regions Bank
- Renasant Bank
- Simmons Bank
- Southern AgCredit
- State Bank of Waterloo
- Stifel Bank
- Synergy Bank
- TIAA Bank
- Trustmark Bank
- UMB Bank, N.A.
- United Community Bank
- Wells Fargo

### Law Firms/Accounting

- Baker Donelson
- Glover, Young, Hammack, Walton & Simmons, PLLC
- Harris Shelton Hanover & Walsh
- Hubbard, Mitchell, Williams & Strain, PLLC
- Lockett Law
- John J. Yim & Associates
- John B. Dongieux, Attorney
- Morton Law Firms, PLLC
- Wright, Lindsey & Jennings LLP

### Mortgage Banks/Services

- Anchor Loans, LP
- ARC Appraisal Review & Compliance
- Colliers International
- Dart Appraisal
- Equity Valuation Partners
- First Resource Capital, LLC
- LRES Corporation
- Mountainseed Appraisal Management, LLC
- Northwind Financial Corporation
- Peartrei Capital, LLC
- Pender Capital
- ReadyCap Commercial, LLC
- RedOak Capital
- Servion Commercial Lending Resources, Inc.
- Synovus Financial Corporation

### Health Care

- Baptist Memorial Health Care Corporation
- Mississippi Baptist Health Systems
- Mississippi Sports Medicine
- University of Mississippi Medical Center

### Government & Organizations

- Canton Municipal Utilities
- Choctaw County School District
- City of Brandon
- City of Clinton
- City of Tallulah
- City of Wyoming
- GSA (Government Services Administration)
- Madison County Board of Supervisors
- MDOT
- Mississippi State University
- Mississippi Action for Progress, Inc.
- Mississippi Emergency Management Agency
- Neal Schaffer Engineering
- Public Service Commission of Yazoo City
- USPS (United States Postal Service)
- US Army Corps of Engineers
- US Small Business Administration
- Wildlife Mississippi

### Developers/Owners

- Alman Realty & Associates, LLC
- Ayers-Delta Implement
- Byram Place, Inc.
- Capital City Beverage
- CommerceOne (IO)
- Delta Enterprises
- G & N, L.L.C.
- Gilad Development
- Jackson Commons, LLC
- McLarty Automotive Group
- Phelps Dunbar, LLP
- Retro/Metro, LLC
- Sartain's Heritage Properties
- The Partridge Company
- Thornberry Land, LLC
- Torys LLP
- Trace Colony Properties, LLC
- Transource Group, Inc.
- Wal-mart Stores, Inc.



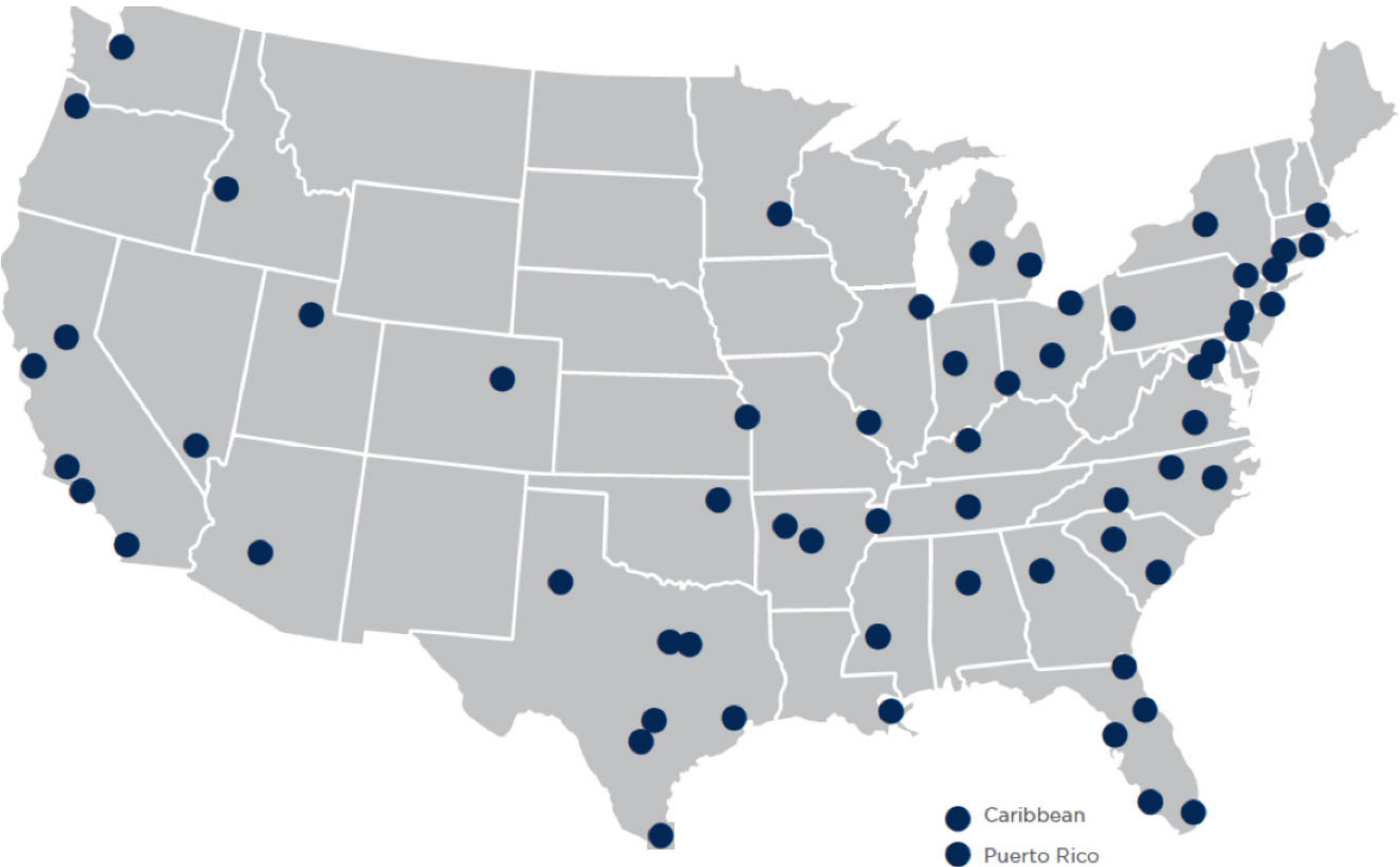
LOCAL EXPERTISE. NATIONALLY.

50+

local offices

60+

markets covered U.S. and Caribbean



## NORTHEAST OFFICES

### CONNECTICUT

Hartford, CT  
Todd Isaacson, MAI  
T (860) 291-8997 ext. 19  
tisaacson@irr.com

### DISTRICT OF COLUMBIA

Washington, DC  
Marshall A. Burke, MAI, CCIM  
T (202) 601-4146  
mburke@irr.com

### MASSACHUSETTS

Boston, MA  
Jerry J. Manfra, MAI  
T (617) 457-3298  
jmanfra@irr.com

### NEW JERSEY

Coastal New Jersey  
Halvor J. Egeland, MAI  
T (732) 244-7000 ext. 103  
hegeland@irr.com

Northern New Jersey  
Paul T. Beisser, CRE, MAI, SCGRE  
T (973) 422-9800  
pbeisser@irr.com

### NEW YORK

Syracuse, NY  
William J. Kimball, MAI, FRICS  
T (315) 422-5577  
wkimball@irr.com

### PENNSYLVANIA

Philadelphia, PA  
Albert (Chip) Hughes, MAI  
T (610) 238-0238 ext. 1  
chughes@irr.com

Pittsburgh, PA  
Brian Kelly, MAI, SRA  
T (412) 683-2211  
bkelly@irr.com

### RHODE ISLAND

Providence, RI  
Todd Isaacson, MAI  
T (860) 291-8997 ext. 19  
tisaacson@irr.com

## SOUTHEAST OFFICES

### ALABAMA

Birmingham, AL  
Rusty Rich, MAI, MRICS  
T (205) 949-5995  
rrich@irr.com

### ARKANSAS

Little Rock, AR  
John R. Praytor, MAI  
T (601) 714-1665  
jpraytor@irr.com

### FLORIDA

Miami | Caribbean  
James Andrews, MAI, CRE, FRICS, ASA/BV  
T (305) 670-0001 ext. 320  
jandrews@irr.com

Orlando, FL  
Christopher D. Starkey, MAI  
T (407) 843-3377 ext. 112  
cstarkey@irr.com

Southwest Florida  
Carlton J. Lloyd, MAI  
T (239) 687-5801  
clloyd@irr.com

Tampa, FL  
Bradford L. Johnson, MAI, MRICS  
T (813) 287-1000 ext. 121  
bljohnson@irr.com

### GEORGIA

Atlanta, GA  
Matthew Albigese, MAI  
T (404) 418-4358 ext. 1000  
malbigese@irr.com

### LOUISIANA

New Orleans, LA  
John R. Praytor, MAI  
T (601) 714-1665  
jpraytor@irr.com

### MISSISSIPPI

Jackson, MS  
John R. Praytor, MAI  
T (601) 714-1665  
jpraytor@irr.com

### NORTH CAROLINA

Charlotte, NC  
John D. Scott, Jr., MAI, MRICS  
T (704) 206-8258  
jscott@irr.com

Greensboro, NC  
Nancy B. Tritt, MAI, SRA, FRICS  
T (336) 676-6033  
ntritt@irr.com

Raleigh, NC  
Chris R. Morris, MAI, FRICS  
T (919) 847-1717  
cmorris@irr.com

### SOUTH CAROLINA

Charleston, SC  
Cleveland "Bud" Wright, Jr., MAI  
T (843) 718-2125 ext. 10  
cwright@irr.com

Columbia, SC  
Michael B. Dodds, MAI, CCIM  
T (803) 772-8282 ext. 110  
mdodds@irr.com

### TENNESSEE

Memphis, TN  
John R. Praytor, MAI  
T (601) 714-1665  
jpraytor@irr.com

Nashville, TN  
Paul Perutelli, MAI, SRA, FRICS  
T (615) 628-8275 ext. 1  
pperutelli@irr.com

### VIRGINIA

Richmond, VA  
Kenneth L. Brown, MAI, FRICS, CCIM  
T (804) 346-2600 ext. 209  
kbrown@irr.com

## CENTRAL OFFICES

### ILLINOIS

Chicago, IL  
Ron DeVries, MAI, FRICS  
T (312) 565-3432  
rdevries@irr.com

### INDIANA

Indianapolis, IN  
Michael Lady, MAI, SRA, ASA, CCIM, FRICS  
T (317) 546-4720  
mlady@irr.com

### KENTUCKY

Louisville, KY  
Stacey S. Nicholas, MAI, MRICS  
T (502) 452-1543 ext. 3774  
snicholas@irr.com

### MICHIGAN

Detroit, MI  
Donald L. Selvidge, MAI  
T (248) 540-0040 ext. 114  
dselvidge@irr.com

Grand Rapids, MI  
Jeff Genzink, MAI  
T (616) 261-5000  
jgenzink@irr.com

### MINNESOTA

Minneapolis/St. Paul, MN  
Michael Amundson, MAI, CCIM, FRICS  
T (952) 905-2401  
mamundson@irr.com

### MISSOURI

Kansas City, MO  
Brock A. Heyde, MAI  
T (816) 652-0222  
bheyde@irr.com

St. Louis, MO  
Timothy M. Schoemehl, MAI  
T (636) 898-6533  
tschoemehl@irr.com

### OHIO

Cincinnati/Dayton, OH  
Gary S. Wright, MAI, FRICS, SRA  
T (513) 426-7125  
gwright@irr.com

Cleveland, OH  
Douglas P. Sloan, MAI  
T (330) 659-3640 ext. 101  
dsloan@irr.com

Columbus, OH  
Brad A. Johnson, MAI  
T (614) 398-4307  
bajohnson@irr.com

## SOUTHWEST OFFICES

### ARIZONA

Phoenix, AZ  
Walter "Tres" Winus, III, MAI, FRICS  
T (602) 266-5599  
twinius@irr.com

### TEXAS

Austin, TX  
Todd Rotholz, MAI  
T (713) 973-0212 ext. 12  
trotholz@irr.com

Dallas, TX  
Jimmy H. Jackson, MAI  
T (972) 725-7724  
jhjackson@irr.com

Ft. Worth, TX  
Alan Pursley, MAI, SRPA, SRA, SGA  
T (817) 763-8023  
apursley@irr.com

Houston, TX  
Todd Rotholz, MAI  
T (713) 973-0212 ext. 12  
trotholz@irr.com

Lubbock, TX  
Taylor Carmona  
T (409) 656-5199  
taylor.carmona@irr.com

San Antonio, TX  
Brandon Brehm, MAI, CCIM  
T (210) 446-4444  
bbrehm@irr.com

## WEST OFFICES

### CALIFORNIA

Los Angeles, CA  
John G. Ellis, MAI, CRE, FRICS  
T (818) 290-5444  
jellis@irr.com

Orange County  
J. Richard Donahue, MAI  
T (714) 665-6515  
rdonahue@irr.com

Sacramento, CA  
Kevin Ziegenmeyer, MAI  
T (916) 435-3883 ext. 224  
kziegenmeyer@irr.com

San Diego, CA  
John A. Morgan, MAI  
T (858) 259-4900 ext. 315  
jmorgan@irr.com

San Francisco, CA  
Jeffrey Fillmore, MAI  
T (408) 299-0444  
jfillmore@irr.com

### COLORADO

Denver, CO  
Larry B. Close, MAI  
T (720) 833-5931  
lclose@irr.com

### IDAHO

Boise, ID  
Bradford Knipe, MAI, ARA, CRE, CCIM, FRICS  
T (208) 472-3200  
bknipe@irr.com

### NEVADA

Las Vegas, NV  
Charles E. Jack, IV, MAI  
T (702) 906-0480  
cjack@irr.com

### UTAH

Salt Lake City, UT  
John T. Blanck, MAI, MRICS  
T (801) 263-9700 ext. 109  
jblanck@irr.com

### WASHINGTON

Seattle, WA  
Matthew A. Bacon, MAI  
T (206) 436-1179  
mbacon@irr.com

## CARIBBEAN

Caribbean  
James Andrews, MAI, CRE, FRICS, ASA/BV  
T (844) 952-7604 ext. 402  
jandrews@irr.com

Puerto Rico  
Carlos Vélez, MAI, SRA, BCA, CMEA, CCIM, MRICS  
T (787) 782-4974  
cvelez@irr.com

**INTEGRA REALTY RESOURCES - JACKSON**

617 Renaissance Way, Suite 100  
Jackson, MS 39157  
T: (601) 714-1665  
F: (601) 500-5314  
[irr.com/Jackson](http://irr.com/Jackson)

John Praytor, MAI  
Executive Director  
T (601) 714-1665  
[jpraytor@irr.com](mailto:jpraytor@irr.com)

James (Jim) O. Turner, MAI  
Managing Director  
T (601) 714-1665  
[jturner@irr.com](mailto:jturner@irr.com)

**irr.com**

Visit us online to learn more  
and access our extensive  
research library.



INTEGRA REALTY RESOURCES  
Local Expertise. Nationally.